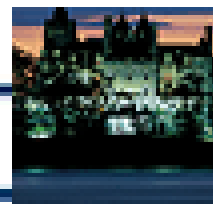
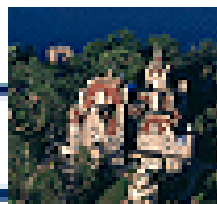


2009 Annual Industry-Environment Conference

October 15, 2009



NEW YORK STATE



What is NYSERDA?

- Public benefit corporation
- Established by the New York State Legislature in 1975
- NYSERDA is tasked to address the State's energy & environmental challenges

Mission

Use innovation and technology to solve some of New York's most difficult energy and environmental problems in ways that improve the State's economy

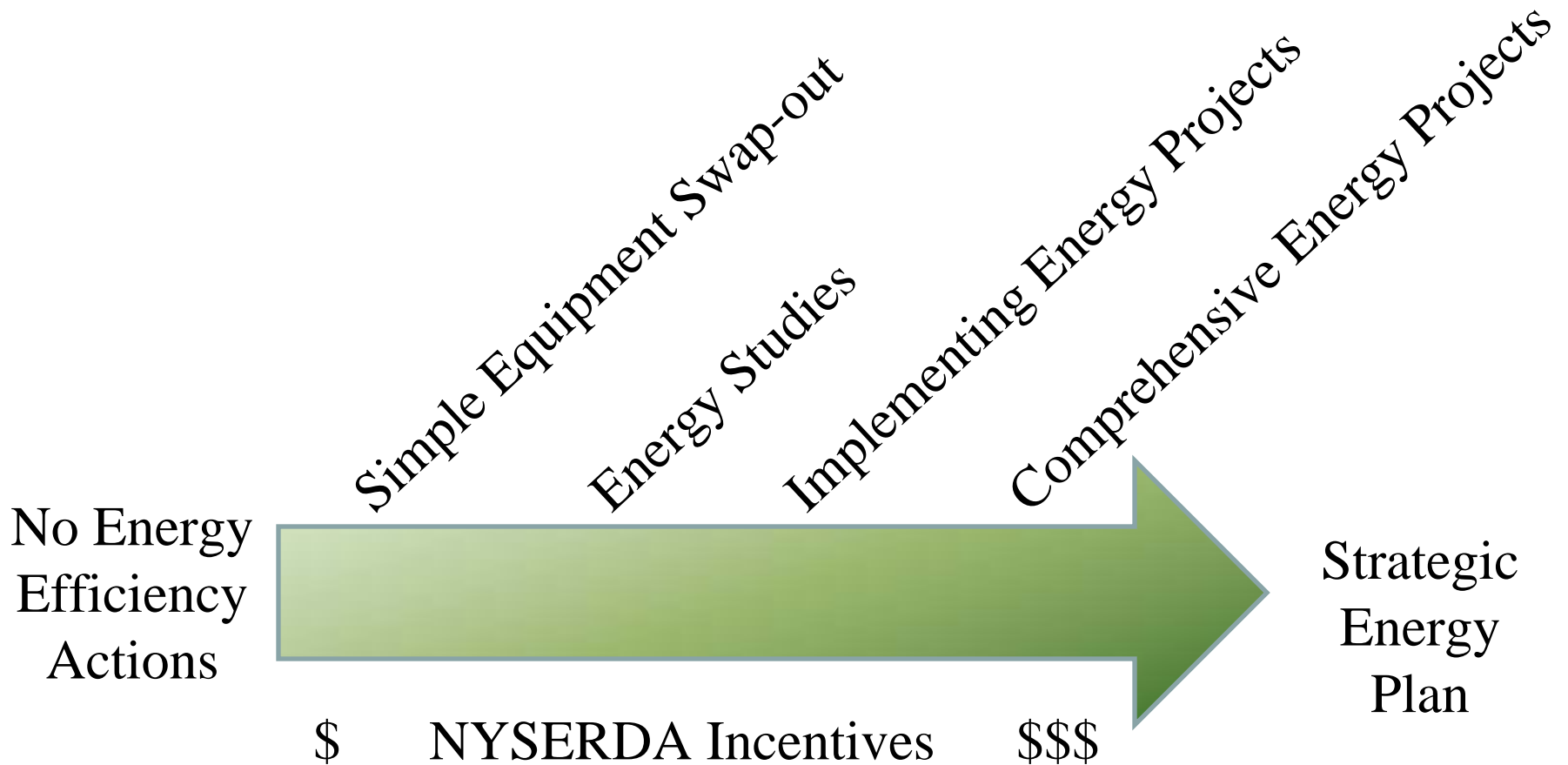


EEPS

Energy Efficiency Portfolio Standard

- 15 x 15
 - 15% energy consumption reduction by 2015
- NYSERDA Program
 - \$93 Million over 3 years for Industrial and Process Efficiency electricity savings.
 - 840,000 MWh savings goal
 - Includes:
 - Manufacturing
 - Data Centers

Energy Efficiency Continuum



Commercial & Industrial Programs

New Buildings

- New Construction/Green Buildings

Existing Buildings

- FlexTech/Technical Assistance
- Existing Facilities Program
 - Pre-Qualified
 - Performance Based
 - Industrial and Process Efficiency
 - Data Center
 - CHP



New Construction Program

Objective

Transform the way buildings are designed and built

Services

- Energy Modeling
- Incentives for efficient equipment and systems
- Commissioning
- Green Building Planning Assistance
- Additional funding for LEED® rated buildings

*****Apply Early in Process*****

Design Intent is Ideal



FlexTech-Technical Assistance

Objective: *Provide comprehensive, customized cost-shared energy studies*

- Feasibility Studies
- Energy Master Plans
- Energy Procurement
- Retro-Commissioning
- CHP/Renewables
- Load Curtailment
- Energy Advisor Consulting



<http://www.nyserda.org/programs/flextech.asp>

Moving from the Mechanical Room

- Energy use is embedded in product
- Every piece of scrap has an energy component
- Re-work uses additional energy
- EHS Systems have energy component
- Lean/6 Sigma/Productivity Projects all have an energy component
- If we can calculate energy savings, we have an incentive

Industrial and Process Efficiency Incentives

Electric:

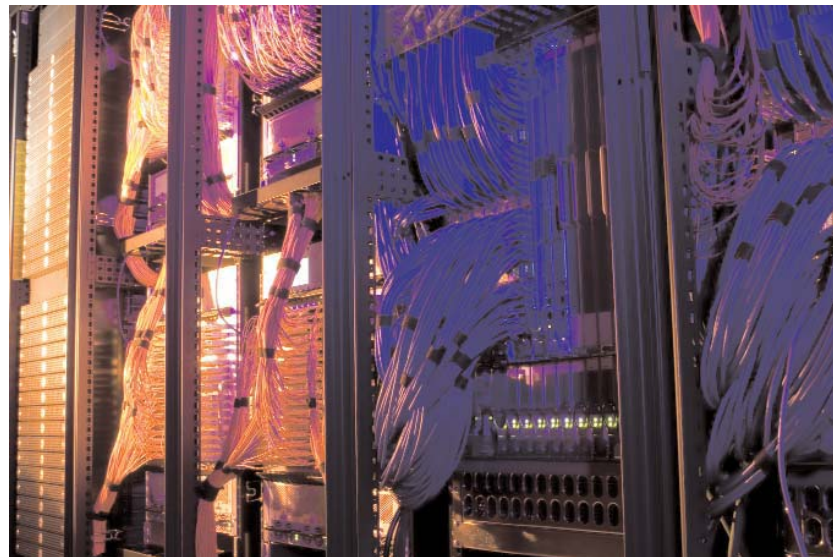
- Savings Measured as Energy Use/Unit Production (\$.12/kWh)
- All projects require a detailed engineering analysis to determine savings
- Caps: 50% of project cost, \$5 million per site per year
- >500,000 kWh requires M&V
- Just approved for Natural Gas Incentives—stay tuned for details

Process Examples

- Increase throughput
- Increases yield
- Reduces scrap

Data Center Approach and Incentives

- Flexibility
- Incentive \$.12/kWh
- Improvements to IT and computing efficiency
- Support system efficiency:
 - Process cooling
 - Air flow management
 - Utilization of waste heat
- Energy savings based on energy use per unit of data processed before and after improvement



Existing Facilities Program

Performance Based Participation Process

Step 1	Application (Customer or Contractor)
Step 2	NYSERDA Reviews Application and Engineering Analysis
Step 3	NYSERDA Consultant Reviews Analysis/Pre-Site Inspection
Step 4	NYSERDA issues agreement to Applicant
Step 5	Applicant Completes Project
Step 6	Applicant notifies NYSERDA consultant /Schedule Post-Site Inspection
Step 7	NYSERDA Consultant Conducts Site Visit/Collects Final Deliverables
Step 8	NYSERDA Provides Payment

National Grid Incentives

- National Grid will soon be offering incentives to large industrial customers
- NYSERDA looks forward to working closely with National Grid as they develop and launch their program to ensure maximum benefits to National Grid customers
- Working together to achieve EEPs goals of reducing energy use in New York State

Conclusion

- There are opportunities to improve the energy performance of most facilities.
- Energy efficiency is less expensive than energy production.
- Many energy measures also generate economic, process, comfort and environmental benefits.
- NYSERDA or National Grid incentives can help justify projects.

NYSERDA can help

www.nysERDA.org

Cheryl Glanton

518-862-1090

1-866-nysERDA

ext. 3483

cmg@nysERDA.org